

YOU ALONE

based on the recording of Gracious Father

Words by Matthew Carpenter

Music and Arr. by Joel Arcieri and Matthew Carpenter

Arranged by Keith McMinn

♩ = 92

B \flat (no3)

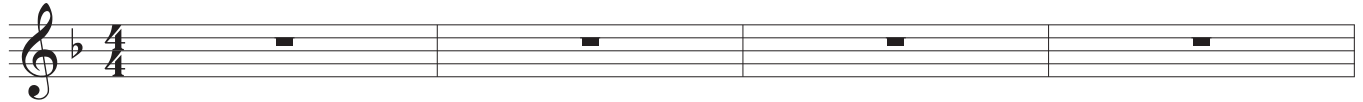
B \flat

F

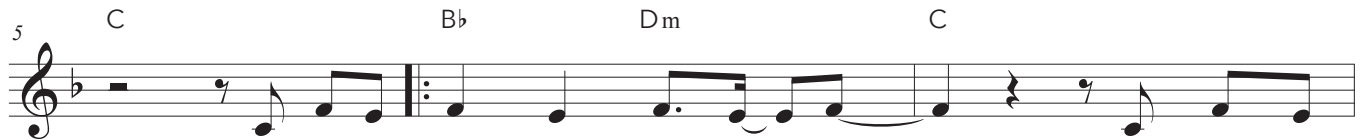
C

B \flat

F



VERSE



1. To Him a - lone the Ra - diant One, _____ whose right - eous -
 2. To Him a - lone whose voice de - clares, _____ all things to
 3. To Him a - lone the Ser - vant King, _____ who chose our
 4. To Him a - lone the heir of _____ life, _____ who by His

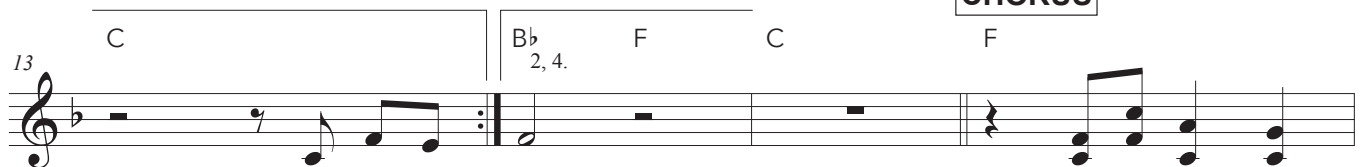


ness out - shines the sun. _____ Whose ho - li - ness leaves us un - done,
 be while just and fair. _____ Who shel - ters us with lov - ing care,
 grief and suff - er - ing, _____ All for the joy that He'd re - ceive,
 death has re - con - ciled, _____ His en - e - mies to be His bride,

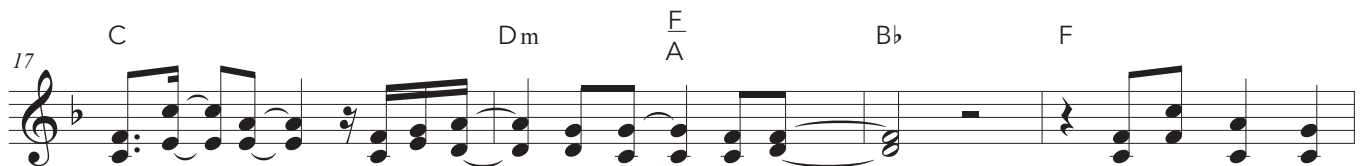


_____ be glo - ry. _____
 _____ be glo - ry. _____
 _____ be glo - ry. _____
 _____ be glo - ry. _____

CHORUS



2. To Him a You a - lone are
 4. To Him a



wor - thy of _____ the a - ffec - tions of _____ our hearts! _____ Oh the splen - dor

21

C Gm7 Dm7 C B \flat F

1.


of our God! How can we not stand in awe, of You a-lone?

25 C B \flat F C B \flat 2. Dm

3.To Him a

BRIDGE

29 C B \flat Dm7 C B \flat (#4) B \flat



For from Him, and

33

C C^{sus} C Dm(add 9) F/A B♭(#4) B♭2

A musical staff in G major (one sharp) showing measure 33. The melody consists of eighth notes: G4, A4, B4, A4-G4, F#4-A4, G4-F#4, E4-D4, C4-B3, A3-G2, F#2-E2, D2-C2, B1-A1, G1-F#1, E1-D1, C1-B0. Chords are indicated above the staff: C (G), C^{sus} (A), C (B), Dm(add 9) (F#-A), F/A (E-A), B♭(#4) (D), and B♭2 (C). Lyrics are written below the staff.

through Him, and to Him — be glo - ry — for - ev - er — and

37 C C^{sus} C D^m_{1.}

ev - er, A - men. For

CHORUS

40 F F C

men. You a-lone are wor - thy of the a-ffec-

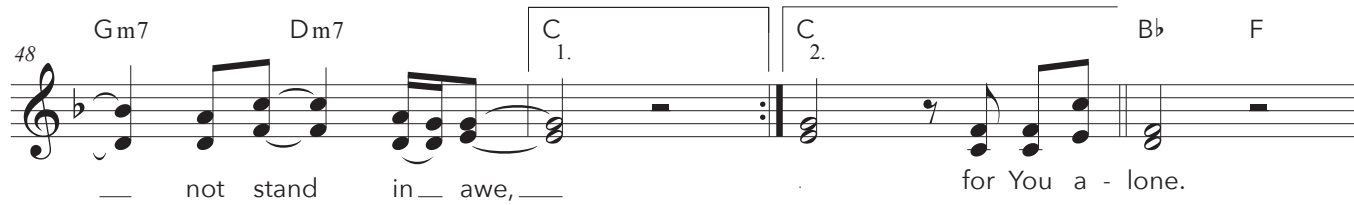
44

Dm F A B \flat F C

- tions of our hearts! Oh the splen-dor of our God! How can we

48

Gm7 Dm7 C 1. C 2. Bb F



— not stand in__ awe, — . for You a - lone.

52

C Bb F C F

